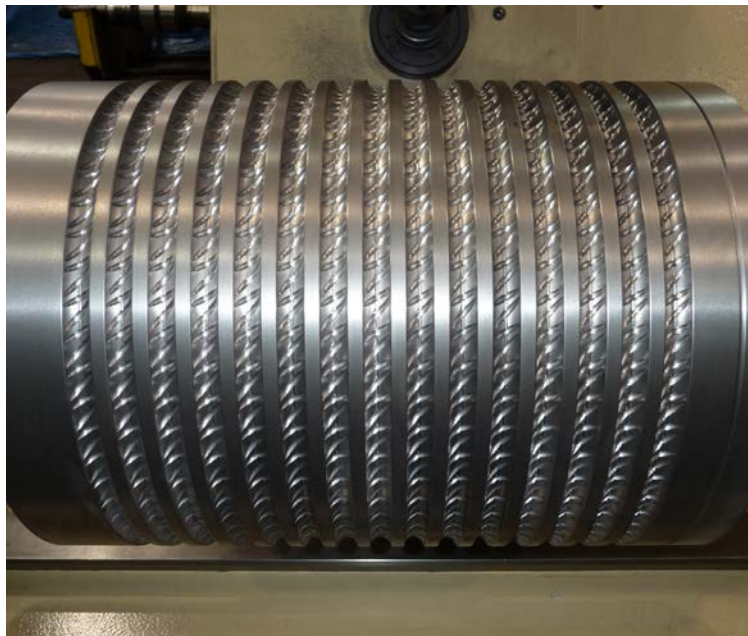




INTRODUCTIONS OF ENGINEERING TECHNOLOGIES



CUTTING TOOLS FOR ROLLING PRODUCTIONS



Intervit Company Ltd (Kiev, Ukraine) in cooperation with State Enterprise “Technological complex of Institute for Problems in Materials Science of National Academy of Sciences of Ukraine” throughout 25 years has developed technology and organized a production of tools for roll-turning workshops of metallurgical and machine-building plants.



Turning and profile grooving

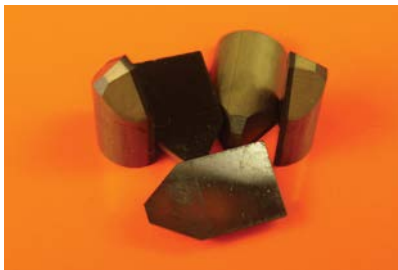
Inserts for turning and forming of rolling groove. Usually we recommend to machine HSS rolls and cast iron rolls by ceramic inserts, but composite tungsten carbide rolls – by CBN inserts.



We produce CBN inserts with concentration 97% that considerably increases a quality of machining and a tool life during the machining of tungsten carbide rolls.

Notching

For notching process we offer PCD inserts and tungsten carbide inserts of different profiles.



Marking

Standard PCD and tungsten carbide marking tools.

Accessories



CBN inserts RNGN



Size	Designation by ISO	d, mm	t, mm	Chamfer	Grade
04	RNGN 040300 T01020	3,97 ±0,025	3,18 ±0,13	- / F / T01020	W97 / W77
05	RNGN 050300 T01020	5,00 ±0,025	3,18 ±0,13	- / T01020	W97 / W77
06	RNGN 060300 T01020	6,35 ±0,025	3,18 ±0,13	- / F / T01020	W97 / W77
	RNGN 06T300 T01020	6,35 ±0,025	3,97 ±0,13	- / F / T01020	W97 / W77
07	RNGN 070300 T01020	7,00 ±0,025	3,18 ±0,13	- / T01020 /	W97 / W77
	RNGN 07T300 T01020	7,00 ±0,025	3,97 ±0,13	- / T01020 /	W97 / W77
08	RNGN 080300 T01020	8,00 ±0,025	3,18 ±0,13	- / T01020 /	W97 / W77
09	RNGN 090300 T01020	9,525 ±0,025	3,18 ±0,13	- / F / S / T01020	W97 / W77
	RNGN 09T300 T01020	9,525 ±0,025	3,97 ±0,13	- / F / S / T01020	W97 / W77
12	RNGN 120300 T01020	12,70 ±0,025	3,18 ±0,13	- / F / S / T01020	W97 / W77
	RNGN 12T300 T01020	12,70 ±0,025	3,97 ±0,13	- / F / S / T01020	W97 / W77
19	RNGN 120400 T01020	12,70 ±0,025	4,76 ±0,13	- / F / S / T01020	W97 / W77
	RNGN 190700 S02015	19,05 ±0,025	7,94 ±0,13	- / F / S / T01020 / K20015	W87
25	RNGN 250900 S02015	25,0 ±0,025	9,52 ±0,13	- / F / S / T01020 / K20015	W87

CBN inserts RBGN



Size	Designation by ISO	d, mm	t, mm	Chamfer	Grade
04	RBGN 040300 T01020	3,97 ±0,025	3,18 ±0,13	- / T01020	W97 / W77
05	RBGN 050300 T01020	5,56 ±0,025	3,18 ±0,13	- / T01020	W97 / W77
06	RBGN 060300 T01020	6,35 ±0,025	3,18 ±0,13	- / T01020	W97 / W77
07	RBGN 07T300 T01020	7,00 ±0,025	3,97 ±0,13	- / T01020	W97 / W77
09	RBGN 090300 T01020	9,525 ±0,025	3,18 ±0,13	- / T01020	W97 / W77
12	RBGN 120400 T01020	12,70 ±0,025	4,76 ±0,13	- / T01020	W97 / W77

CBN inserts RCMN



Size	Designation by ISO	d, mm	t, mm	Chamfer	Grade
04	RCMN 040300 T01020	3,97 ±0,025	3,18 ±0,13	- / T01020	W97 / W77
05	RCMN 050300 T01020	5,00 ±0,025	3,18 ±0,13	- / T01020	W97 / W77
06	RCMN 060300 T01020	6,35 ±0,025	3,18 ±0,13	- / F / T01020	W97 / W77
	RCMN 06T300 T01020	6,35 ±0,025	3,97 ±0,13	- / F / S / T01020	W97 / W77
07	RCMN 070300 T01020	7,00 ±0,025	3,18 ±0,13	- / T01020	W97 / W77
	RCMN 07T300 T01020	7,00 ±0,025	3,97 ±0,13	- / T01020	W97 / W77
08	RCMN 08T300 T01020	8,00 ±0,025	3,97 ±0,13	- / T01020	W97 / W77
09	RCMN 090300 T01020	9,525 ±0,025	3,18 ±0,13	- / F / T01020	W97 / W77
	RCMN 09T300 T01020	9,525 ±0,025	3,97 ±0,13	- / F / T01020	W97 / W77
12	RCMN 12T300 T01020	12,70 ±0,08	3,97 ±0,13	- / F / T01020	W97 / W77
	RCMN 120400 T01020	12,70 ±0,08	4,76 ±0,13	- / F / T01020 / K20015	W97 / W77

CBN inserts RCGX



Size	Designation by ISO	d, mm	t, mm	Chamfer	Grade	α degrees
06	RCGX 060300 T01020	6,35 ±0,025	3,18 ±0,13	- / F / T01020	W97 / W77	120 / 140
	RCGX 06T300 T01020	6,35 ±0,025	3,97 ±0,13	- / F / T01020	W97 / W77	120 / 140
09	RCGX 090300 T01020	9,525 ±0,025	3,18 ±0,13	- / F / T01020	W97 / W77	120 / 140
	RCGX 09T300 T01020	9,525 ±0,025	3,97 ±0,13	- / F / T01020	W97 / W77	120 / 140
12	RCGX 120300 T01020	9,525 ±0,025	3,18 ±0,13	- / S / T01020 / K20015	W97 / W77	120 / 140
	RCGX 12T300 T01020	12,70 ±0,025	3,97 ±0,13	- / S / T01020 / K20015	W97 / W77	120 / 140
	RCGX 120400 T01020	12,70 ±0,025	4,76 ±0,13	- / S / T01020 / K20015	W97 / W77	120 / 140

Ceramic inserts RNGN



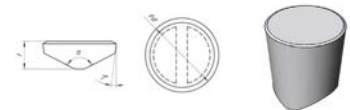
Size	Designation by ISO	d, mm	t, mm	Chamfer	Grade
06	RNGN 060300 T01020	6,35 ±0,025	3,18 ±0,13	- / T01020	W630 / W650 / W660 / W670
	RNGN 060400 T01020	6,35 ±0,025	4,76 ±0,13	- / T01020	W630 / W650 / W660 / W670
09	RNGN 090300 T01020	9,525 ±0,025	3,18 ±0,13	- / T01020	W630 / W650 / W660 / W670
	RNGN 090400 T01020	9,525 ±0,025	4,76 ±0,13	- / T01020	W630 / W650 / W660 / W670
12	RNGN 120300 T01020	12,70 ±0,025	3,18 ±0,13	- / T01020	W630 / W650 / W660 / W670
	RNGN 120400 T01020	12,70 ±0,025	4,76 ±0,13	- / T01020	W630 / W650 / W660 / W670
	RNGN 120600 T01020	12,70 ±0,025	6,35 ±0,13	- / T01020	W630 / W650 / W660 / W670
	RNGN 120700 T01020	12,70 ±0,025	7,94 ±0,13	- / T01020	W630 / W650 / W660 / W670
15	RNGN 150700 T01020	15,87 ±0,025	7,94 ±0,13	- / T01020 / K20015	W630 / W650 / W660 / W670
19	RNGN 190600 S02015	19,05 ±0,025	6,35 ±0,13	- / S / T01020 / K20015	W630 / W650 / W660 / W670
	RNGN 190700 S02015	19,05 ±0,025	7,94 ±0,13	- / S / T01020 / K20015	W630 / W650 / W660 / W670
25	RNGN 250900 S02015	25,0 ±0,025	9,52 ±0,13	- / S / T01020 / K20015	W630 / W650 / W660 / W670

Ceramic inserts RCGN



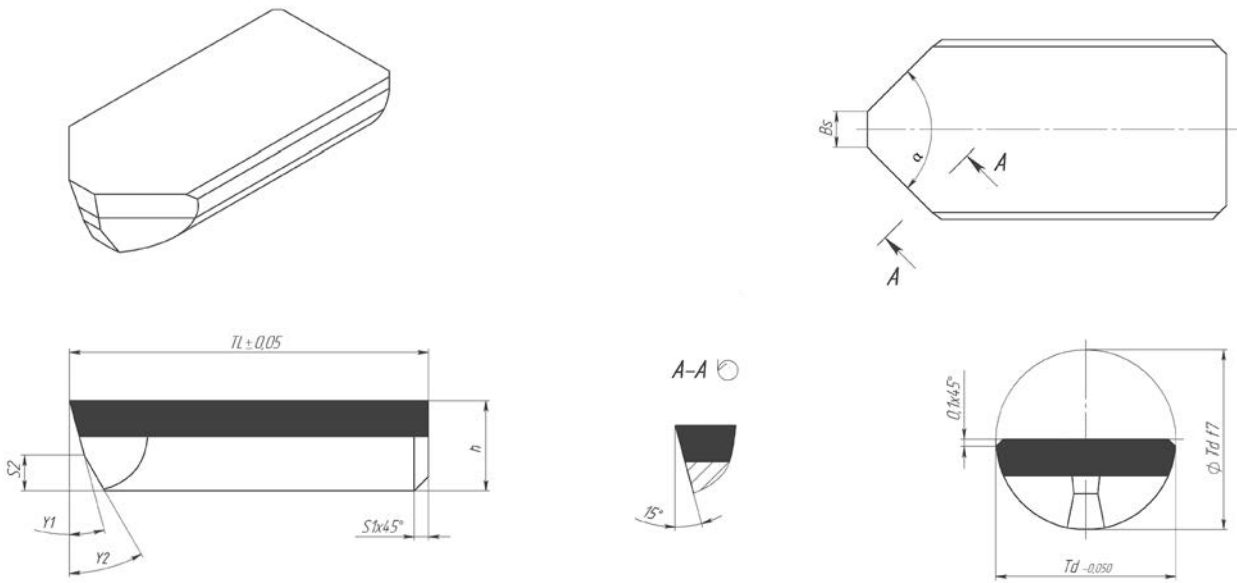
Size	Designation by ISO	d, mm	t, mm	Chamfer	Grade
06	RCGN 060400 T01020	6,35 ±0,025	4,76 ±0,13	- / F / S / T01020	W630 / W650 / W660 / W670
	RCGN 060600 T01020	6,35 ±0,025	6,35 ±0,13	- / F / S / T01020	W630 / W650 / W660 / W670
09	RCGN 090700 T01020	9,525 ±0,025	7,94 ±0,13	- / F / S / T01020	W630 / W650 / W660 / W670
12	RCGN 12T300 T01020	12,70 ±0,025	3,97 ±0,13	- / F / S / T01020 / K20015	W630 / W650 / W660 / W670
	RCGN 120400 T01020	12,70 ±0,025	4,76 ±0,13	- / F / S / T01020 / K20015	W630 / W650 / W660 / W670
19	RCGN 190700 S02015	19,05 ±0,025	7,94 ±0,13	- / F / S / T01020 / K20015	W630 / W650 / W660 / W670
25	RCGN 250900 S02015	25 ±0,025	9,52 ±0,13	- / F / S / T01020 / K20015	W630 / W650 / W660 / W670

Ceramic inserts RCGX



Size	Designation by ISO	d, mm	t, mm	Chamfer	Grade	α, degrees
06	RCGX 060400 T01020	6,35 ±0,025	4,76 ±0,13	- / T01020	W630 / W650 / W660 / W670	120
	RCGX 060600 T01020	6,35 ±0,025	6,35 ±0,13	- / T01020	W630 / W650 / W660 / W670	120
09	RCGX 090700 T01020	9,525 ±0,025	7,94 ±0,13	- / T01020	W630 / W650 / W660 / W670	120
12	RCGX 120700 T01020	12,70 ±0,025	7,94 ±0,13	- / T01020 / K20015	W630 / W650 / W660 / W670	120
	RCGX 151000 T01020	15,87 ±0,025	10,0 ±0,13	- / T01020 / K20015	W630 / W650 / W660 / W670	120
19	RCGX 191000 S02015	19,05 ±0,025	10,0 ±0,13	- / S / T01020 / K20015	W630 / W650 / W660 / W670	120
25	RCGX 251200 S02015	25 ±0,025	12,7 ±0,13	- / S / T01020 / K20015	W630 / W650 / W660 / W670	140

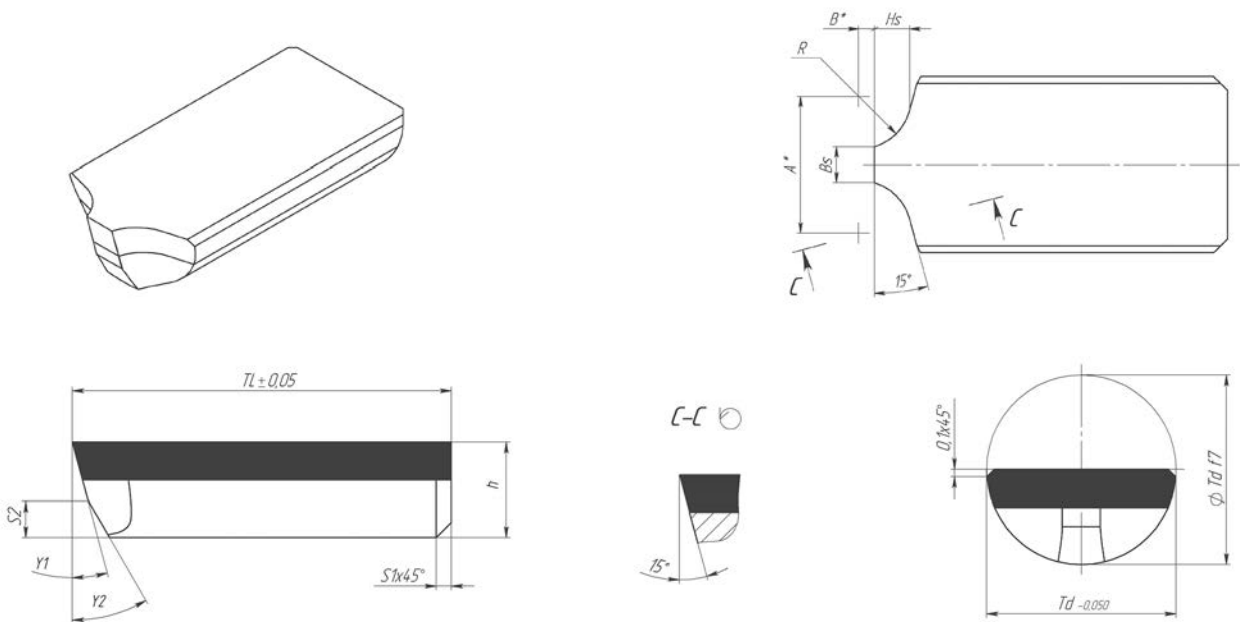
PCD Notching inserts. HOST TYPE



We produce these tools under special orders. For order please specify parameters:

Rb	Td	TL	h	Bs	S1	S2	Y1	Y2	Alfa

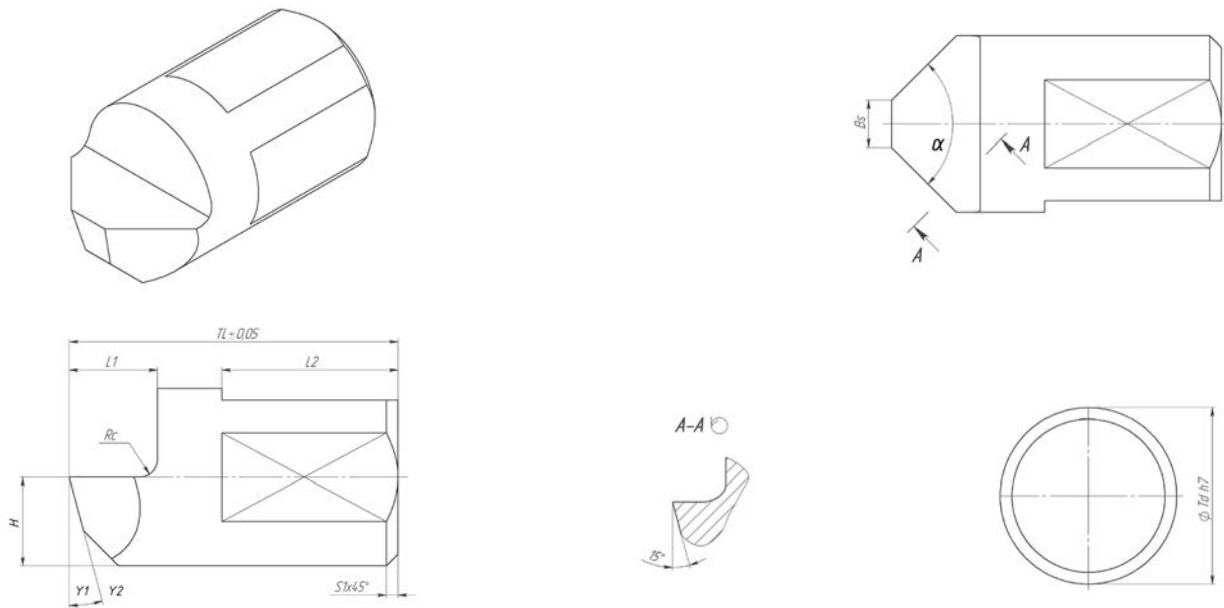
PCD Notching inserts. DIN TYPE



We produce these tools under special orders. For order please specify parameters:

Rb	Td	TL	h	Bs	S1	S2	Y1	Y2	Alfa
							R	A	B

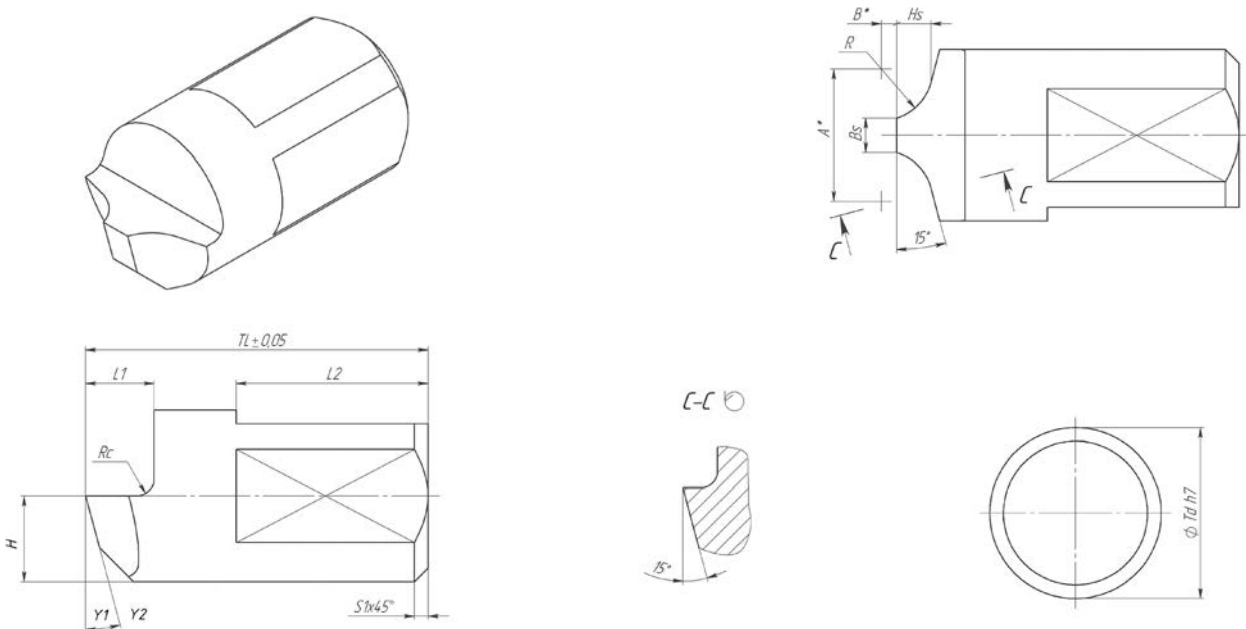
TC Notching insert. HOST TYPE



We produce these tools under special orders. For order please specify parameters:

Rb	Td	TL	h	Bs	S1	S2	Y1	Y2	Alfa

TC Notching insert. DIN TYPE



We produce these tools under special orders. For order please specify parameters:

Rb	Td	TL	h	Bs	S1	S2	Y1	Y2	Alfa	
						R	A	B	L1	L2

Holders CRDNN



Designation by ISO	H, mm	B, mm	L, mm	Cutting insert
CRDNN 2525M04	25	25	150	RNGN 040300
CRDNN 2525M05	25	25	150	RNGN 050300
CRDNN 2525M06	25	25	150	RNGN 060300
CRDNN 3232P07	32	32	170	RNGN 07T300
CRDNN 3232S09	32	32	170	RNGN 090300
CRDNN 4040S12	40	40	250	RNGN 120400
CRDNN 4040S19	40	40	250	RNGN 190700

Holders CRDNR



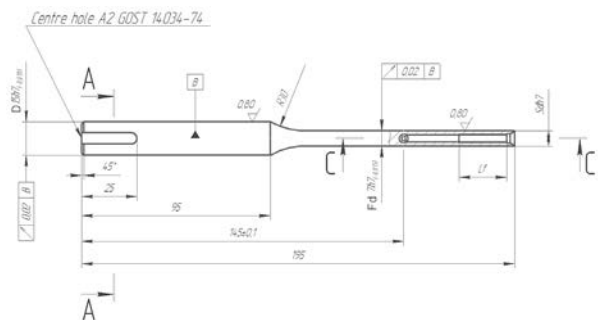
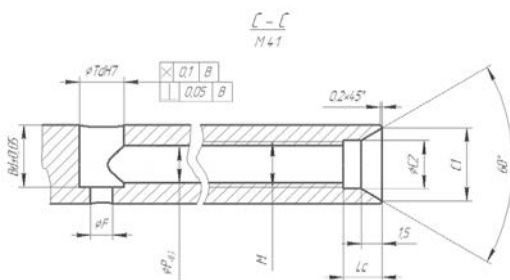
Designation by ISO	H, mm	B, mm	L, mm	Cutting insert
CRDNR 2525M04	25	25	150	RNGN 040300
CRDNR 2525M05	25	25	150	RNGN 050300
CRDNR 2525M06	25	25	150	RNGN 060300
CRDNR 3232P07	32	32	170	RNGN 07T300
CRDNR 3232S09	32	32	170	RNGN 090300
CRDNR 4040S12	40	40	250	RNGN 120400
CRDNR 4040S19	40	40	250	RNGN 190700

Holders CRDNL



Designation by ISO	H, mm	B, mm	L, mm	Cutting insert
CRDNL 2525M04	25	25	150	RNGN 040300
CRDNL 2525M05	25	25	150	RNGN 050300
CRDNL 2525M06	25	25	150	RNGN 060300
CRDNL 3232P07	32	32	170	RNGN 07T300
CRDNL 3232S09	32	32	170	RNGN 090300
CRDNL 4040S12	40	40	250	RNGN 120400
CRDNL 4040S19	40	40	250	RNGN 190700

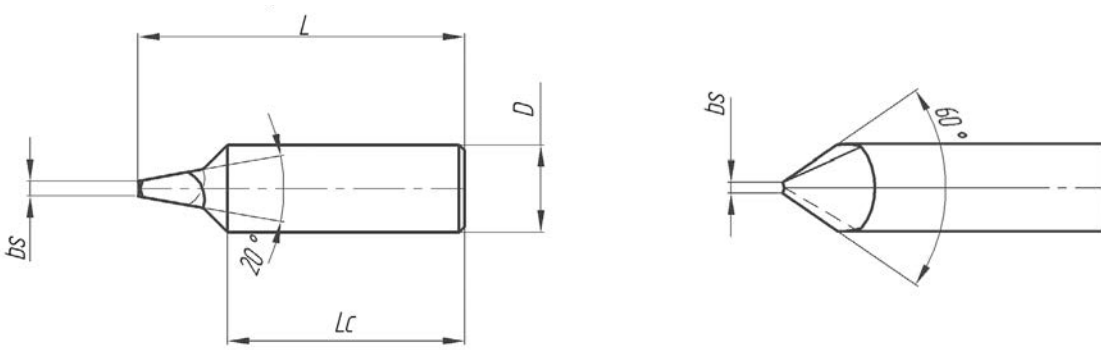
Notching holders



We produce these tools under special orders. For order please specify parameters:

Rb	Sd	Td	Bd	F	P	M	C1	C2	Lc	Lf

Marking tools K01



We produce these tools under special orders. For order please specify parameters:

Rb	D	L	Bs	Lc	Name of machine

PECULIARITIES AND LIMITATIONS

The same marking tool can be used for different types of rebar

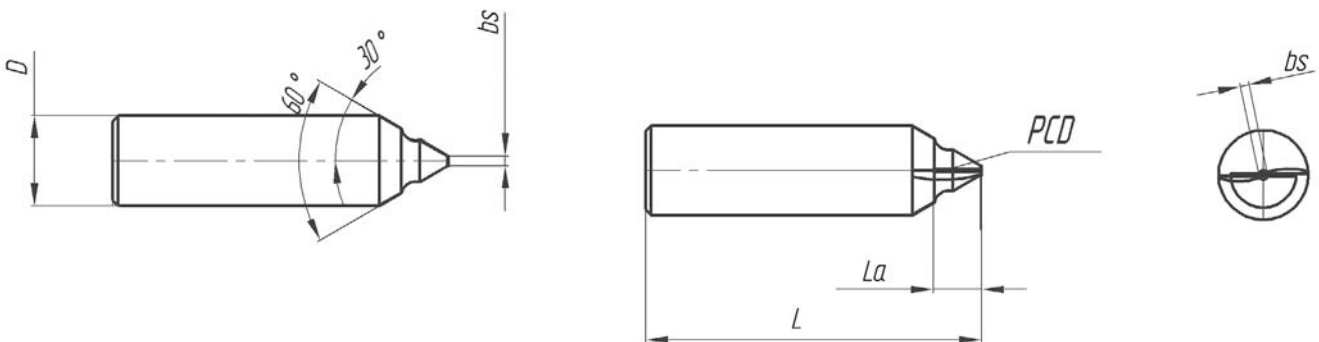
Diameter D usually is 8 mm

Length of tool L depends on type and model of machine

Parameter Bs usually standardized as 0,6; 0,8; 1,0; 1,2; 1,5

For small calibers we make the neck of tool thinner by decreasing of parameter Lc

Marking tools PCD



We produce these inserts under special orders. For order please specify parameters:

Rb	D	L	Bs	La	Name of machine

PECULIARITIES AND LIMITATIONS

The same marking tool can be used for different types of rebar

Diameter D usually is 8 mm

Length of tool L depends on type and model of machine

Parameter Bs usually standardized as 0,6; 0,8; 1,0; 1,2; 1,5

For small calibers we make the neck of tool thinner by increasing of parameter La



Intervit Company Ltd.

Krzhyzhanovskogo str., building 3,

Kyiv, 03142, Ukraine

tel./fax: +38 044 424 86 06

e-mail: sales@intervit.com.ua

e-mail: eng@intervit.com.ua

www.intervit.com.ua